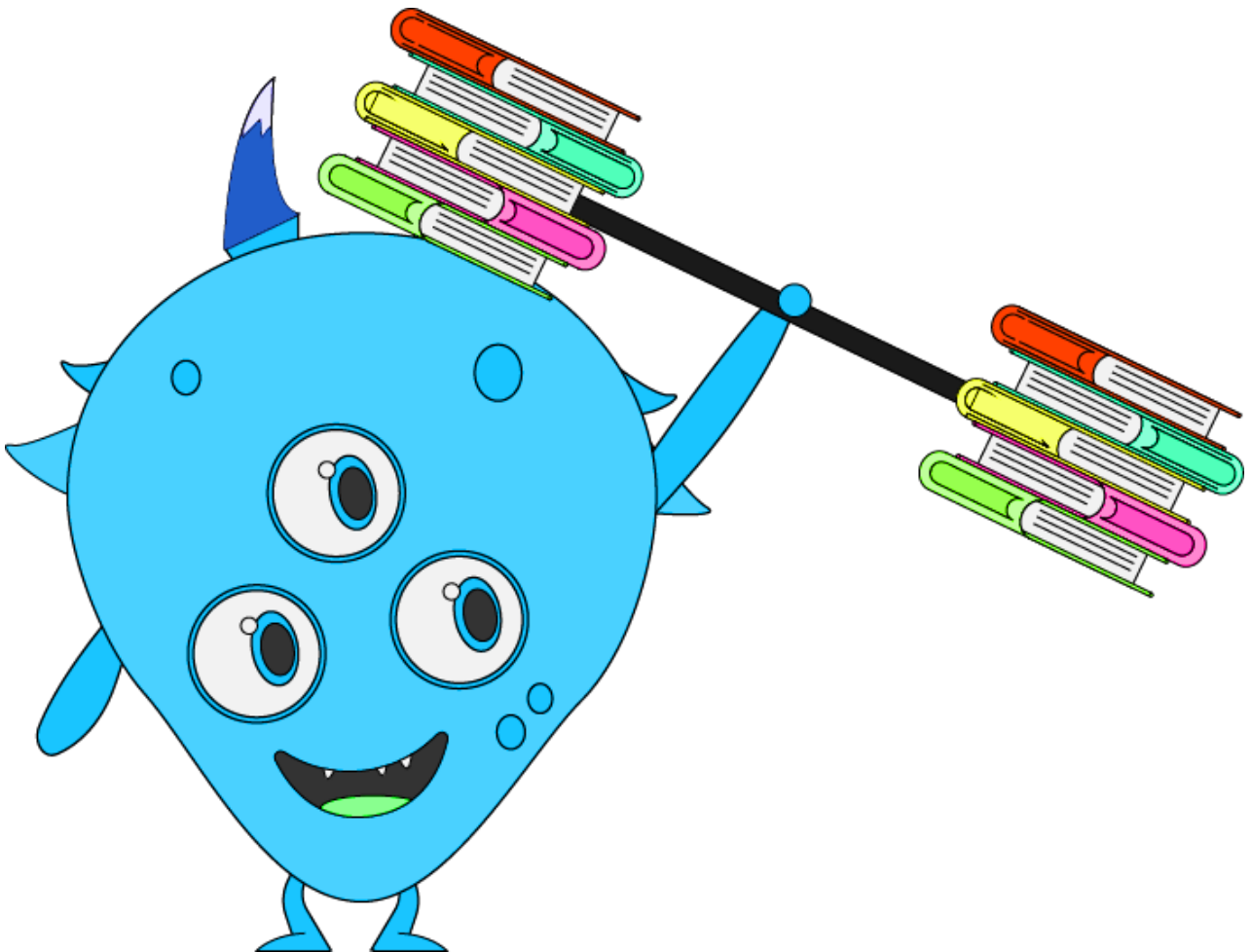


Learning Intention

I am learning to infer,
or figure out, how
people might be
feeling.



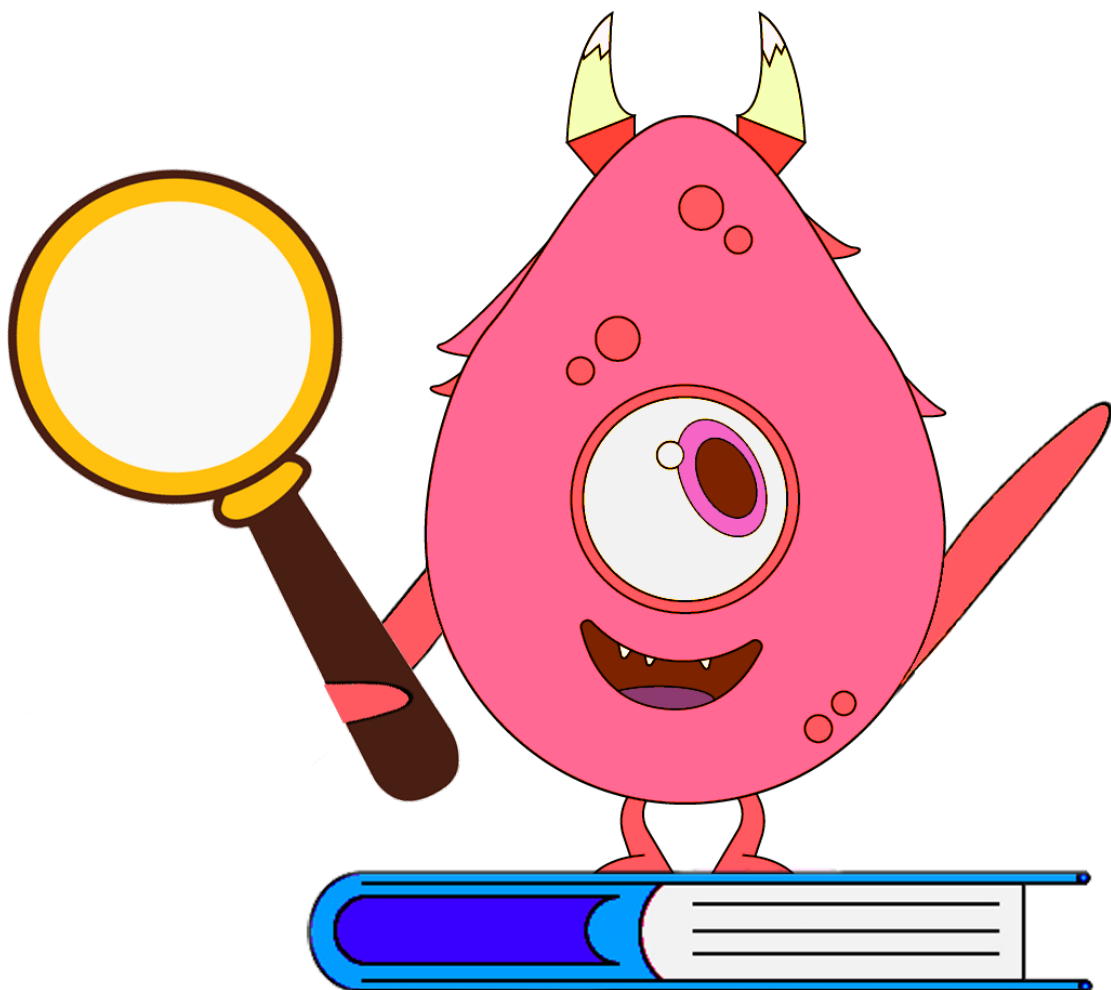
Success Criteria

I will look carefully at people's faces and notice how their bodies are positioned to work out how I think they might feel.



Inferring

Inferring means to figure something out without being told. I can infer how someone feels by using clues on faces, bodies and in voices and thinking about what I know.



Learning Checklist

Check these off as you go.

Chat about these:	✓
What might someone look like if they were sad?	
When someone is happy what do their eyes, cheeks and mouth look like?	

