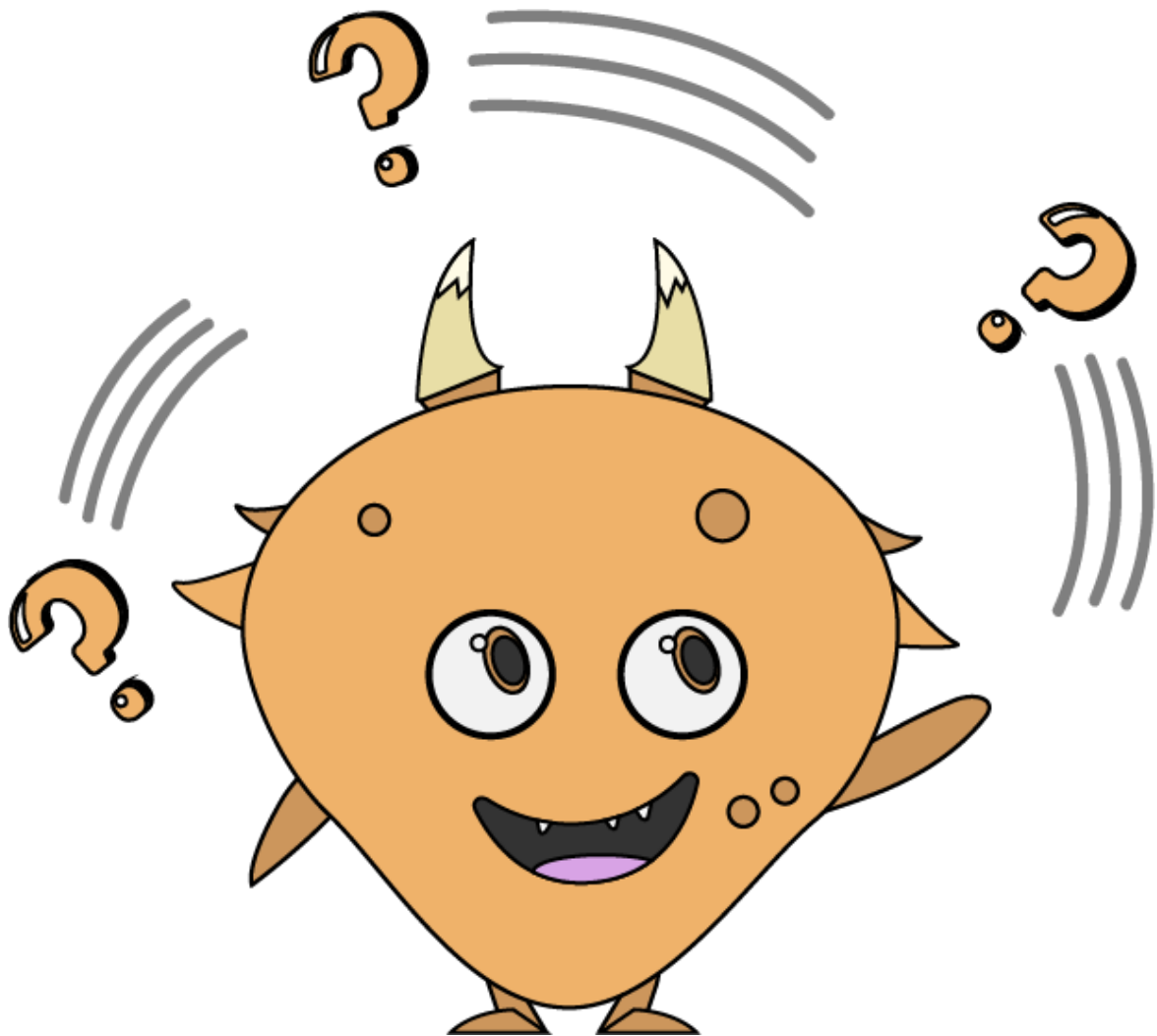


Learning Intention

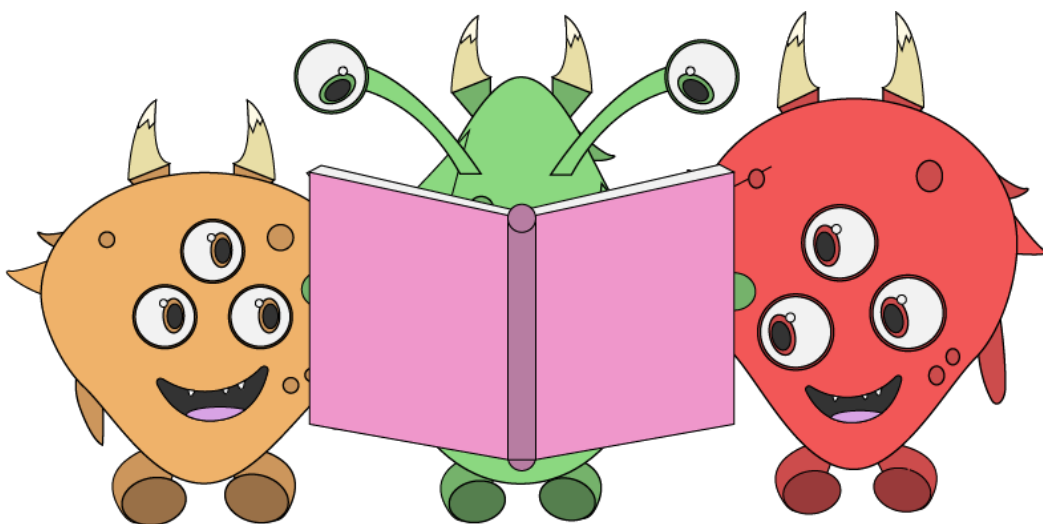
I am learning to infer,
or figure out, the
meanings of words I
don't know.



Success Criteria

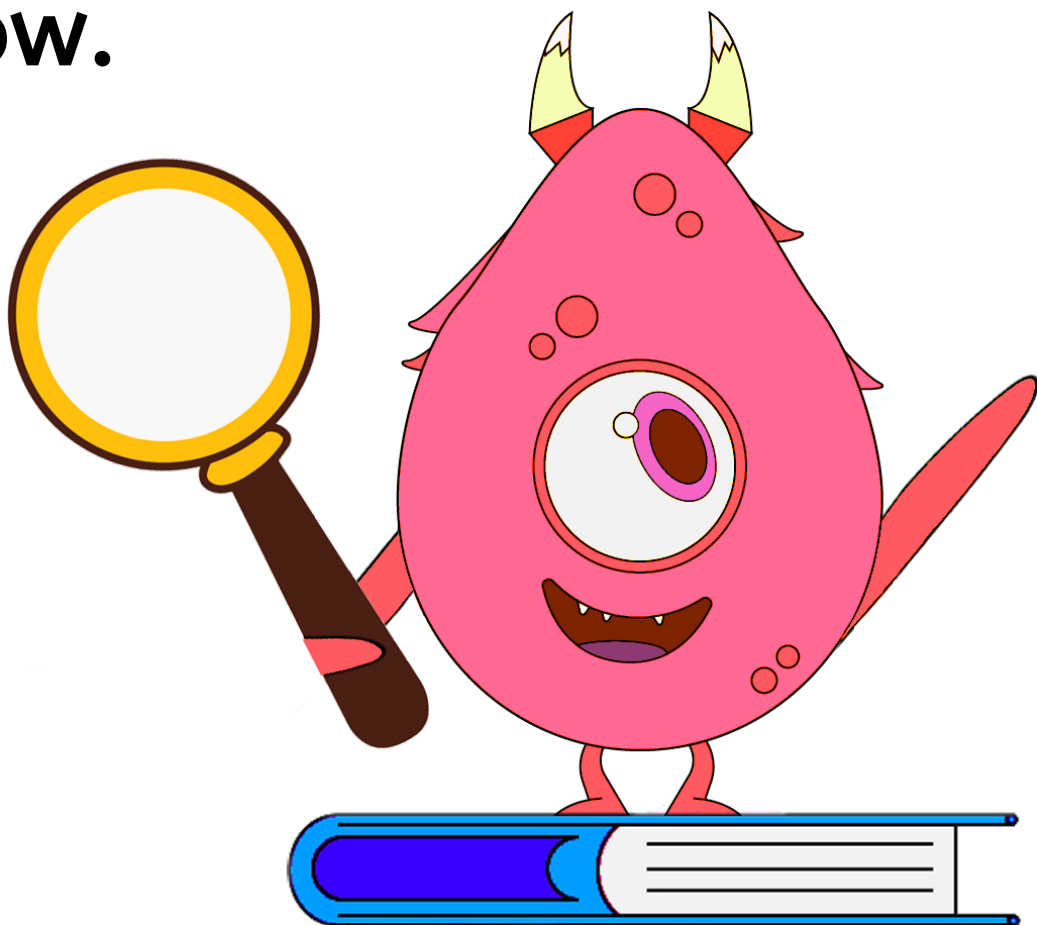
I will find, or identify, words I don't understand. I will try to work out a word's meaning by:

- Thinking, “What makes sense there?”
- Looking for a picture clue
- Swapping the word for one I know



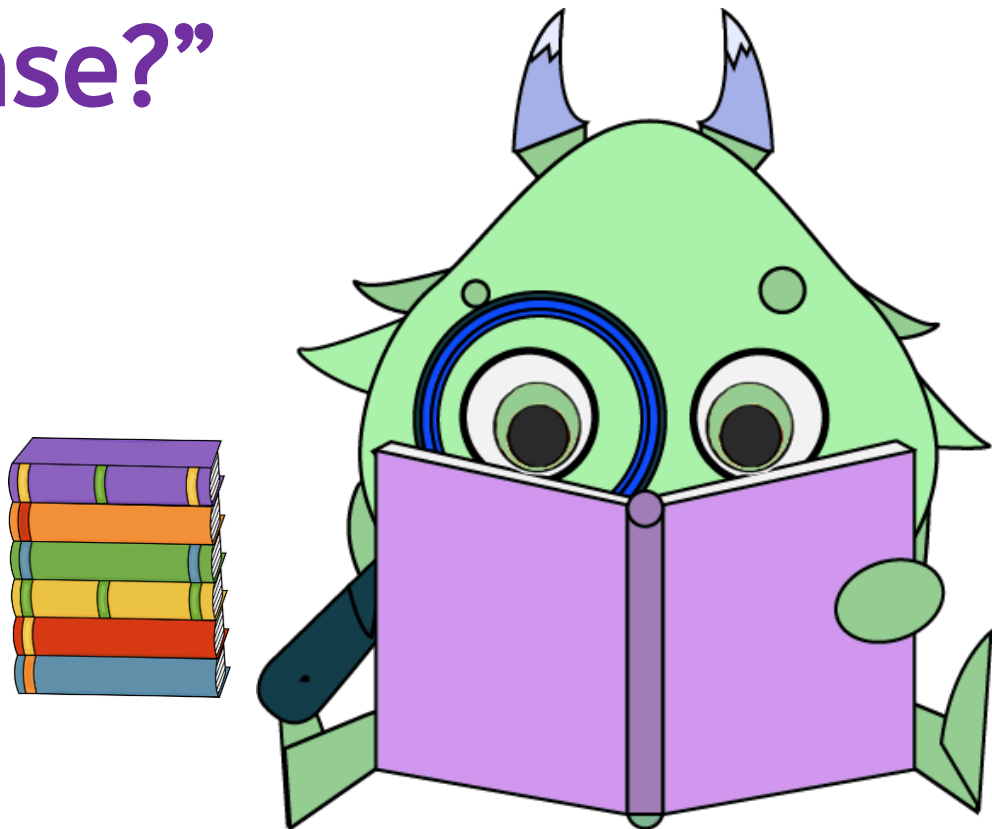
Inferring

Inferring means to figure something out without being told. Great readers infer by looking for clues in the words and pictures and connecting these with what they already know.



Word Meanings

1. Look at the pictures.
2. Read around the word and think, “What would make sense?”
3. Swap the word for another word and think, “Does that make sense?”



Word Meanings

1. Look at the pictures.
2. Read around the word and think, “What would make sense?”
3. Swap the word for another word and think, “Does that make sense?”
4. Think about what parts of the word mean.
For example,
dogs = dog + s
= more than
one dog.



Word Meanings

1. Look at the pictures.
2. Read around the word and think, “What would make sense?”
3. Swap the word for another word and think, “Does that make sense?”
4. Look for a comma and check whether it is followed by the meaning of the word.
5. Look for a word that means the opposite.
6. Think about what parts of the word mean.
For example,
dogs = dog + s
= more than
one dog.



Learning Checklist

Check these off as you go.

Chat about two new words from the story.	✓
Word 1: <hr/>	
Word 2: <hr/>	

