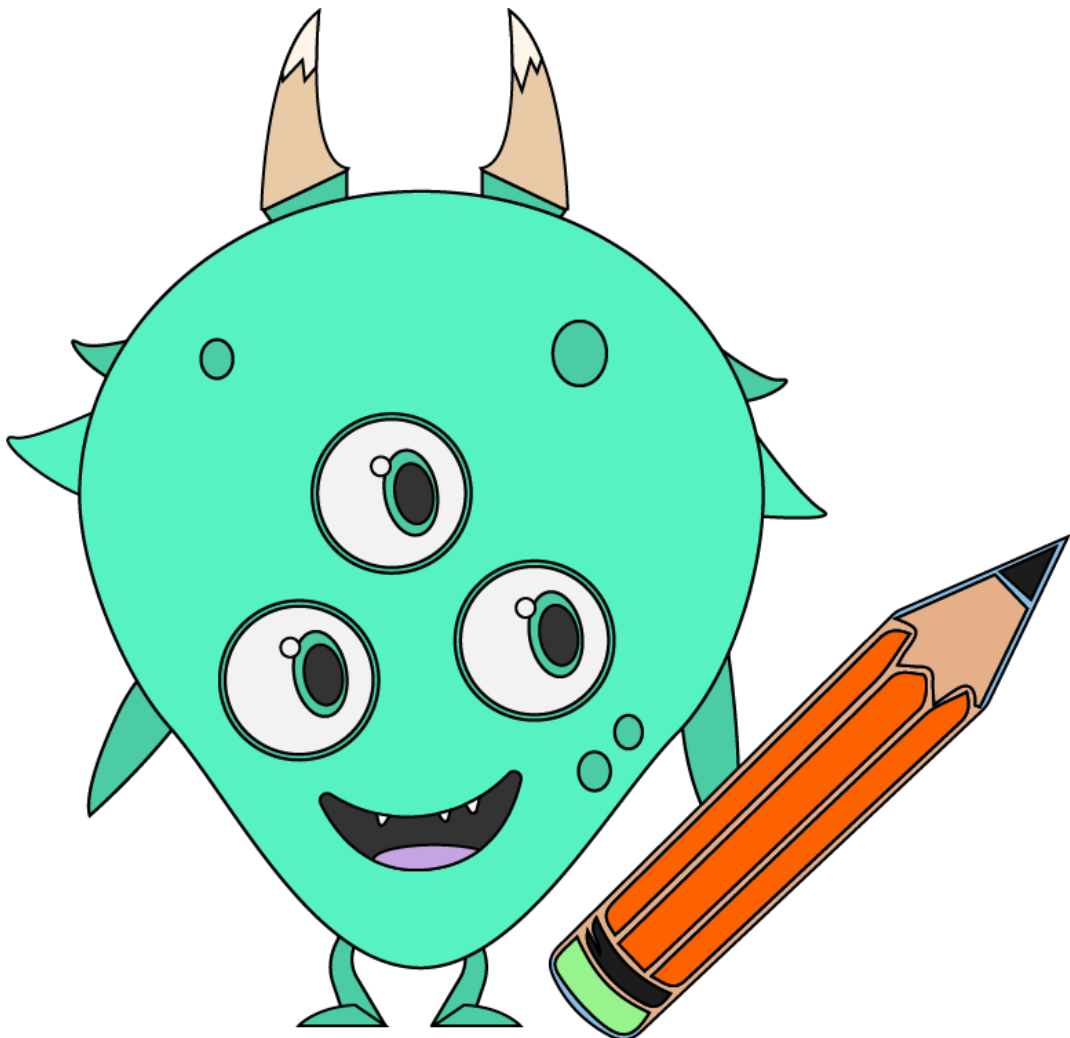


# Learning Intention

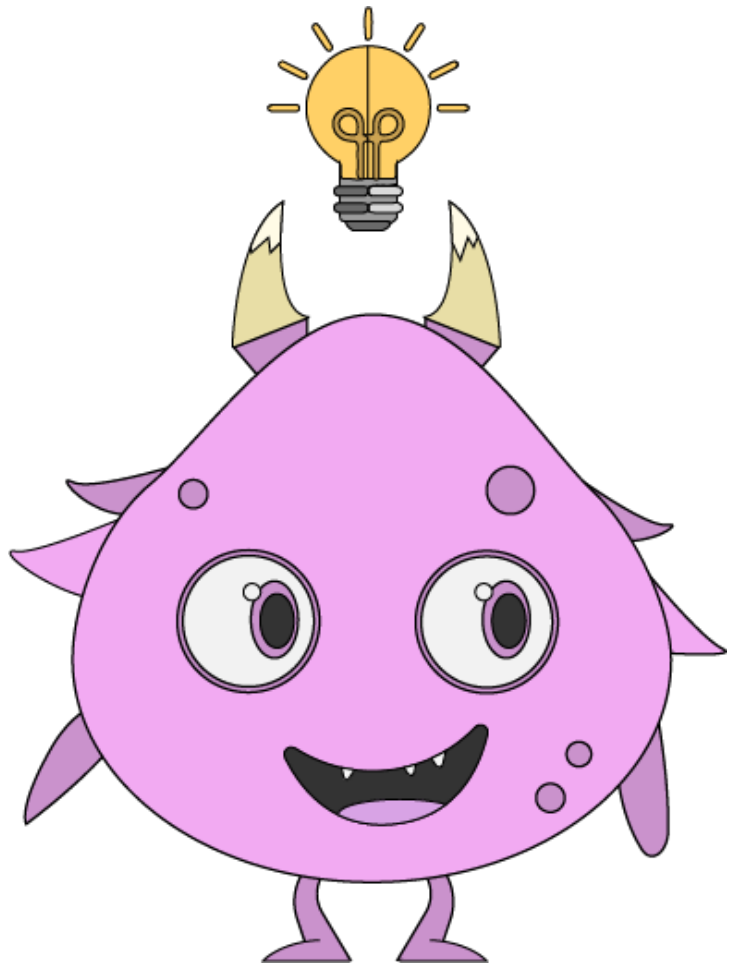
I am learning to infer  
or figure out the main,  
or most important  
idea in a poem.



# Success Criteria

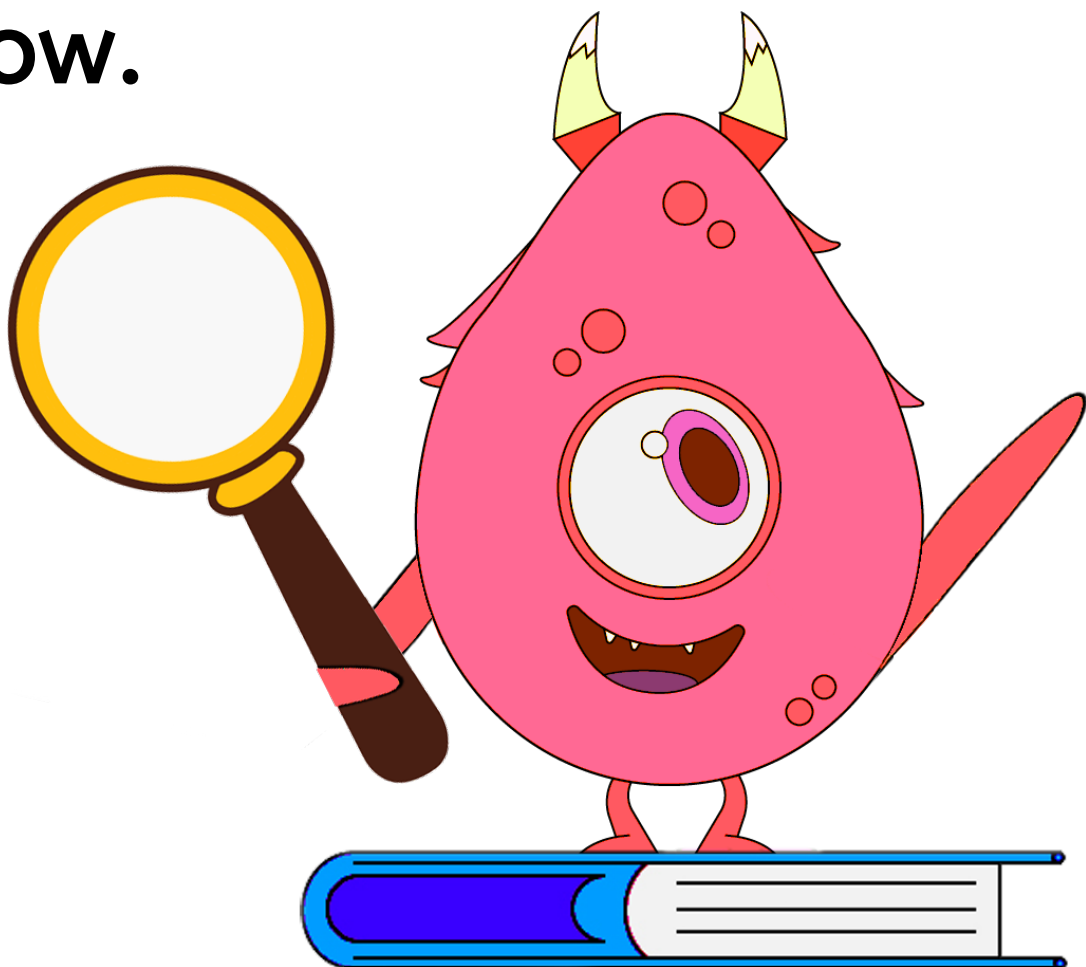
I will pay attention to the clues given. I will use my own knowledge and think, “What do I know that matches that clue?”

Before I infer the main idea, I will check other clues. I will make sure all the clues match my idea.



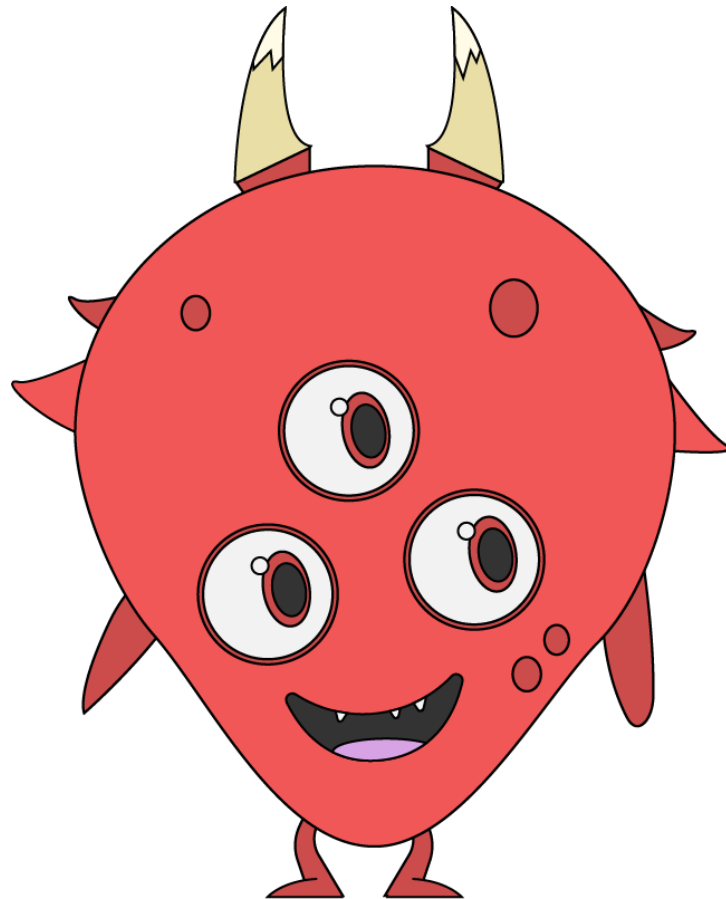
# Inferring

Inferring means to figure something out without being told. Great readers infer by looking for clues in the words and pictures and connecting these with what they already know.



# Finding the Main Idea

The main idea is what the text is mostly about. To find the main idea think,  
“What is the big idea?”  
“What is this mostly about?”



# Learning Checklist

Check these off as you go.

Chat about these:	✓
How many clues were in the poem?	
Why is it important to be a great detective and look for lots of clues?	



Use the clues to infer what this poem is about:

**They're big**  
**They're small**  
**I love them all**  
**They lick**  
**They jump**  
**They play**  
**They slobber on my**  
**nice clean face**  
**I love them every day.**

Did you infer that the poem is about dogs?

