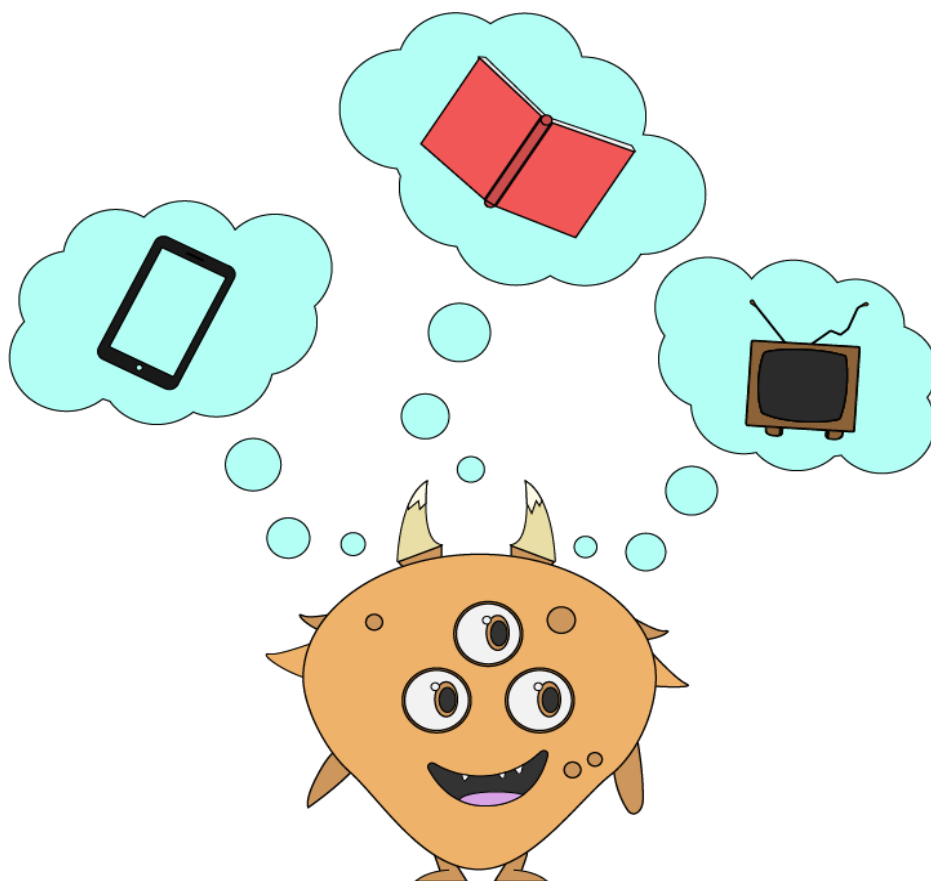


# Learning Intention

I am learning to figure out the main, or most important idea and sum it up.



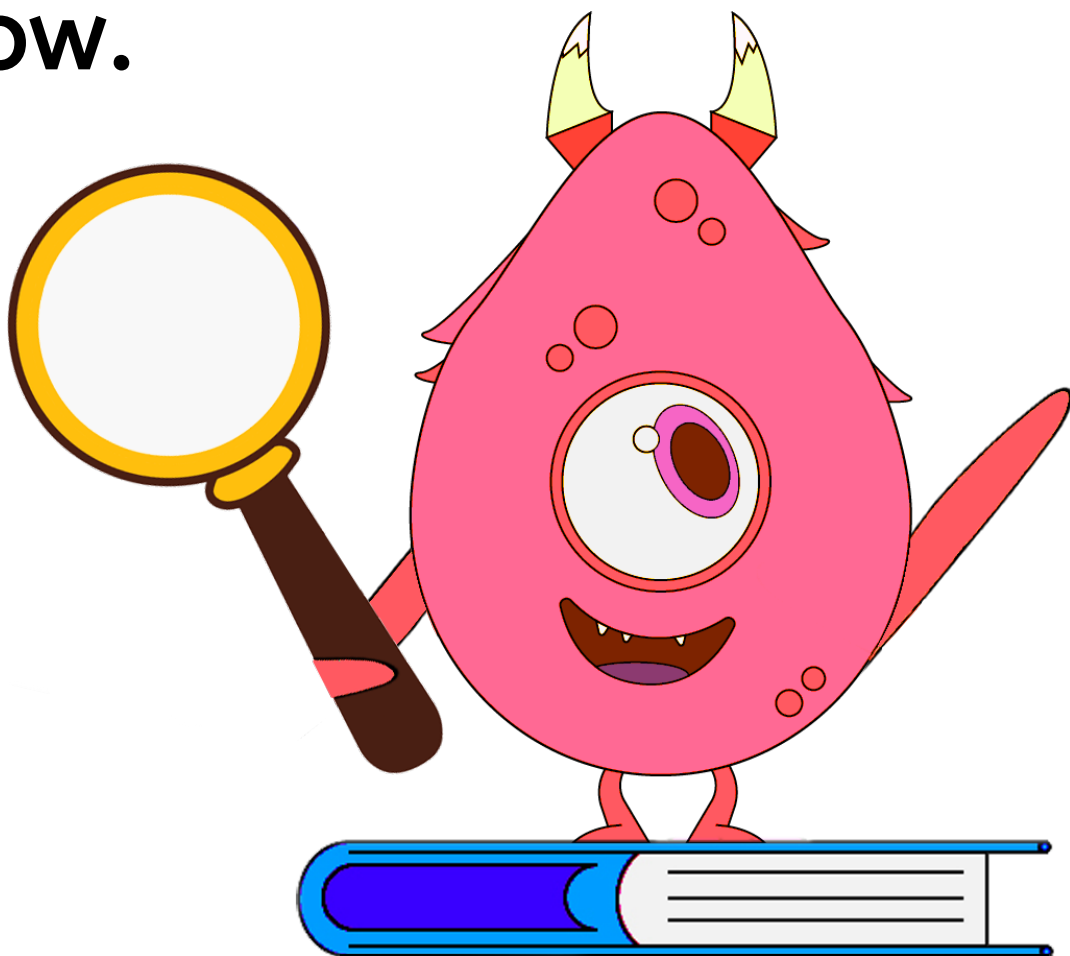
# Success Criteria

I will look for clues which show what the picture is mostly about. I will think about what is happening. I will think of one, two or three words which finish the sentence, “This picture is mostly about ...”



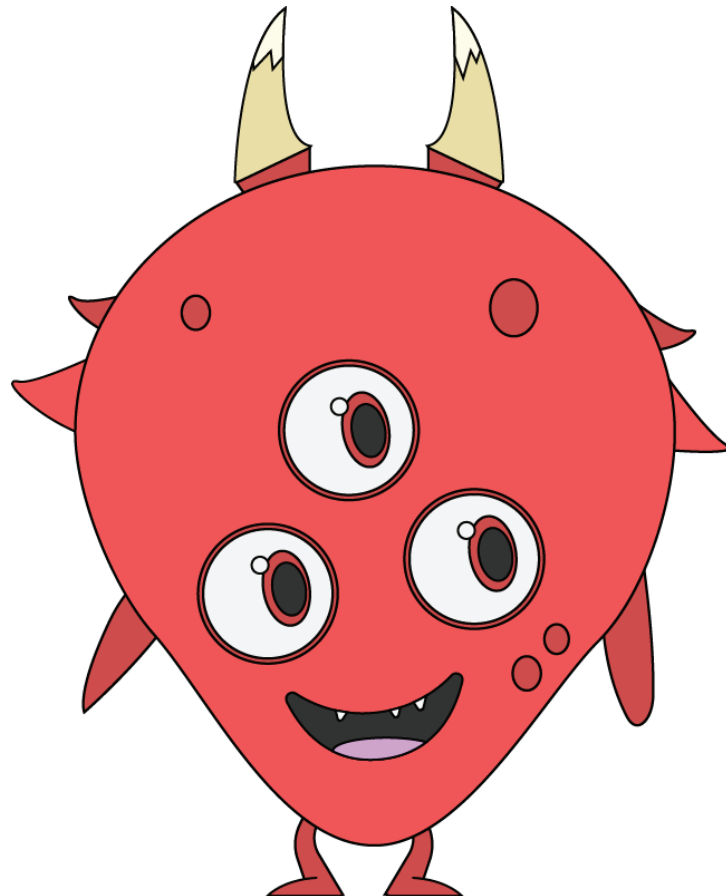
# Inferring

Inferring means to figure something out without being told. Great readers infer by looking for clues in the words and pictures and connecting these with what they already know.



# Finding the Main Idea

The main idea is what the text is mostly about. To find the main idea think,  
“What is the big idea?”  
“What is this mostly about?”

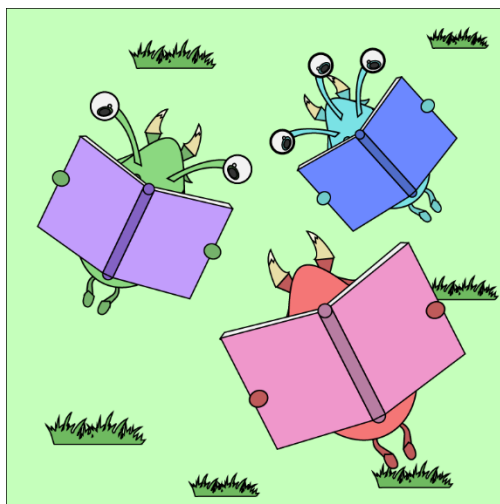




# Learning Checklist

Check these off as you go.

Discuss as a group:	✓
Why is your own knowledge important when you infer?	
Why are clues important when you infer?	





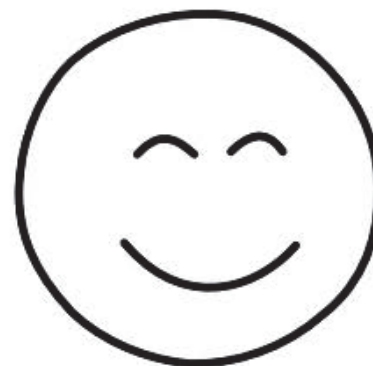
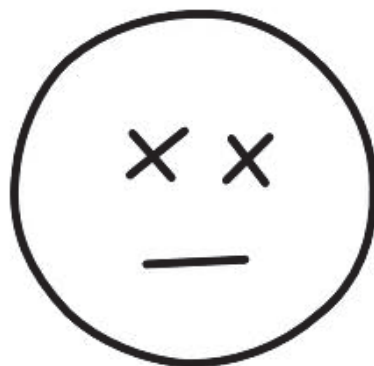
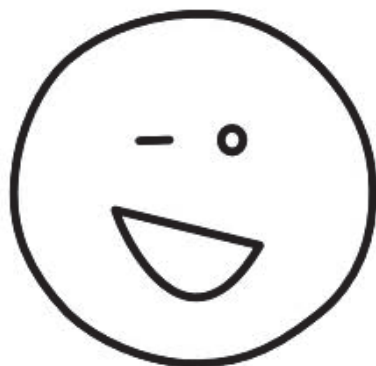
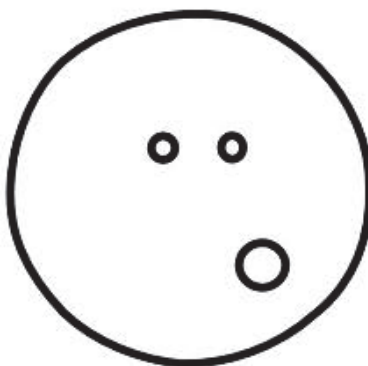
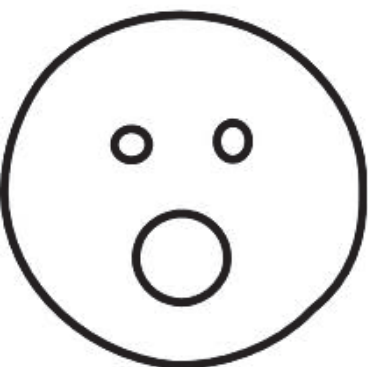


















UNITED STATES NAVY



RY

5830

















































DREAM OF  
THINGS THAT HAVE  
BEEN BUT  
MORE