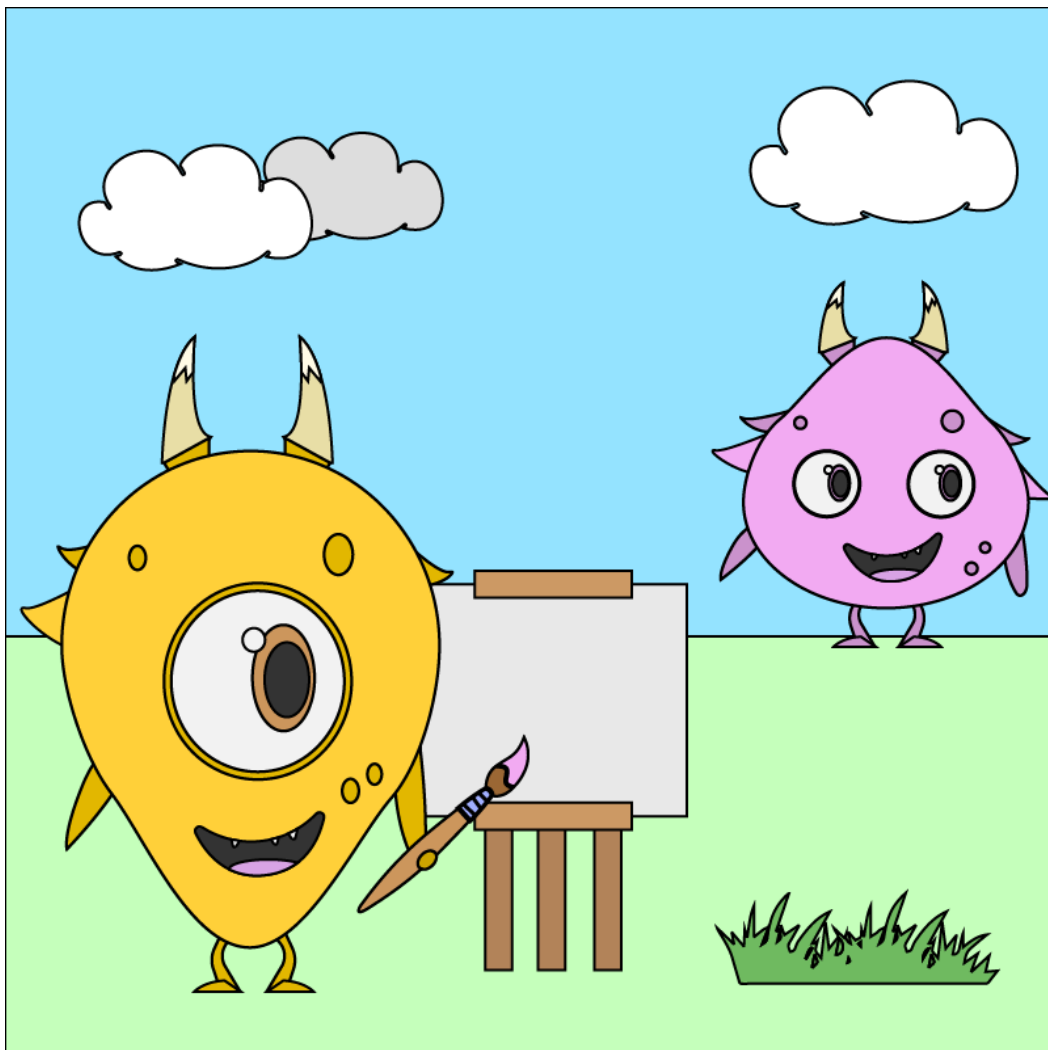


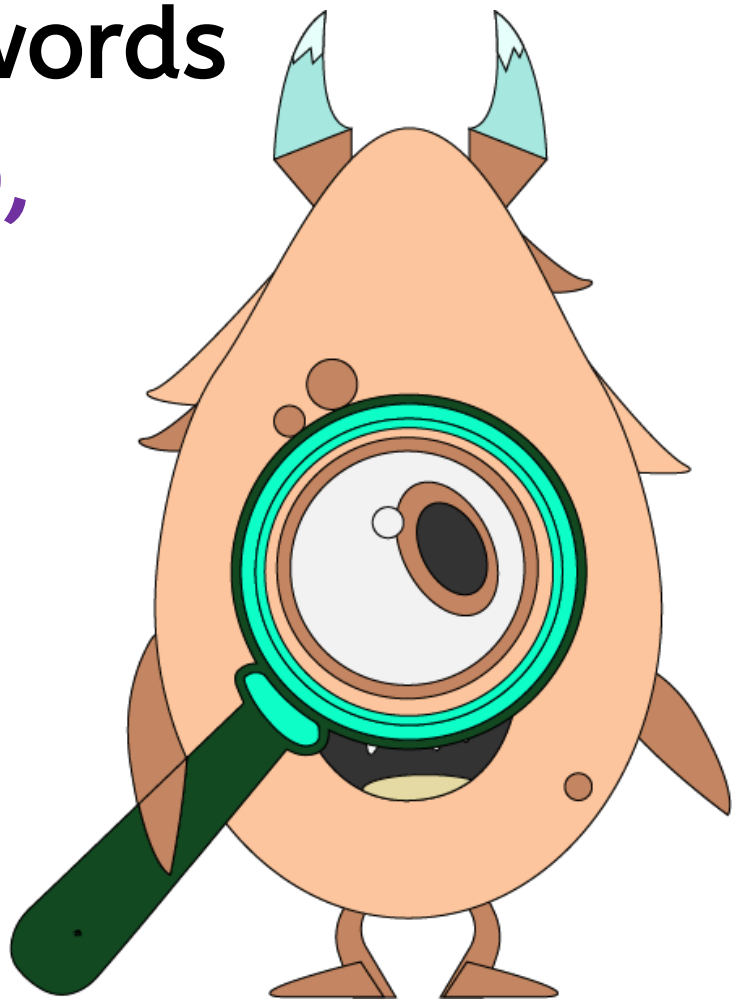
Learning Intention

I am learning to infer or figure out whether a picture is real or imagined.



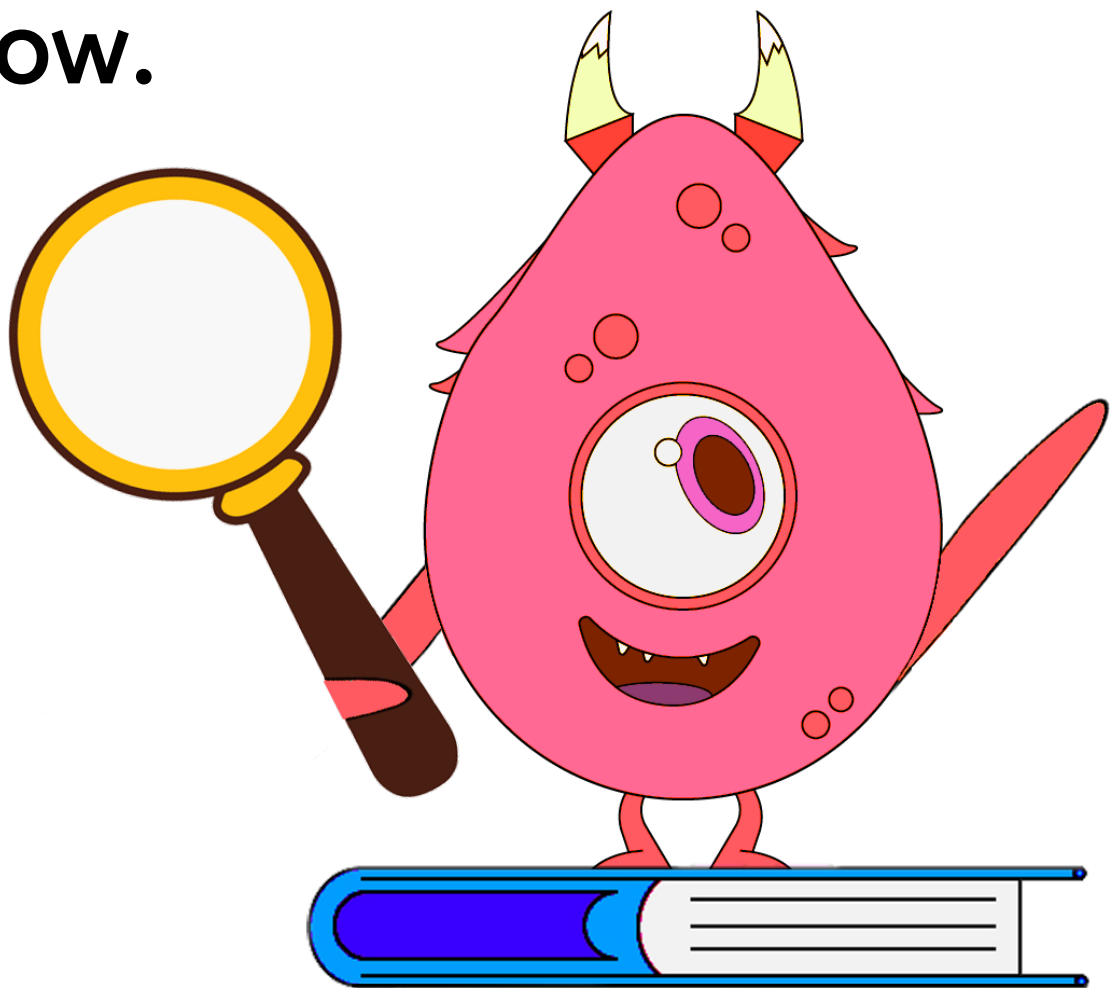
Success Criteria

I will use my own knowledge and clues in the picture to figure out, or infer, whether the idea is real or made up. I will share my inferences and use helper words like **because**, **since** and **so** to give reasons for my thinking.



Inferring

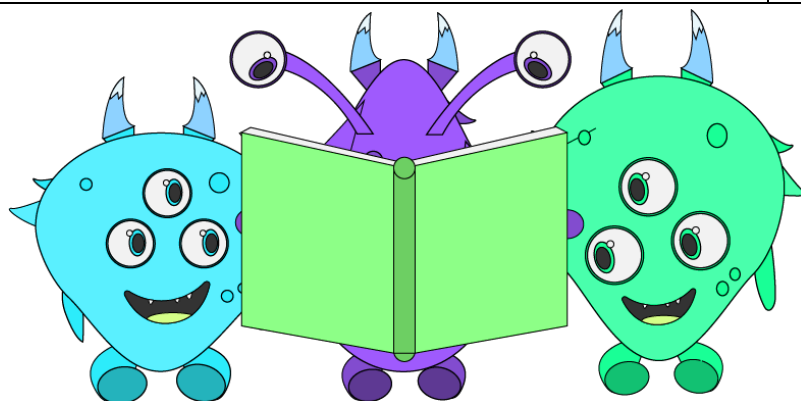
Inferring means to figure something out without being told. Great readers infer by looking for clues in the words and pictures and connecting these with what they already know.



Learning Checklist

Check these off as you go.

Discuss:	✓
Which clues helped us to infer a picture was real?	
Which clues helped us to infer a picture was imagined, or made up?	

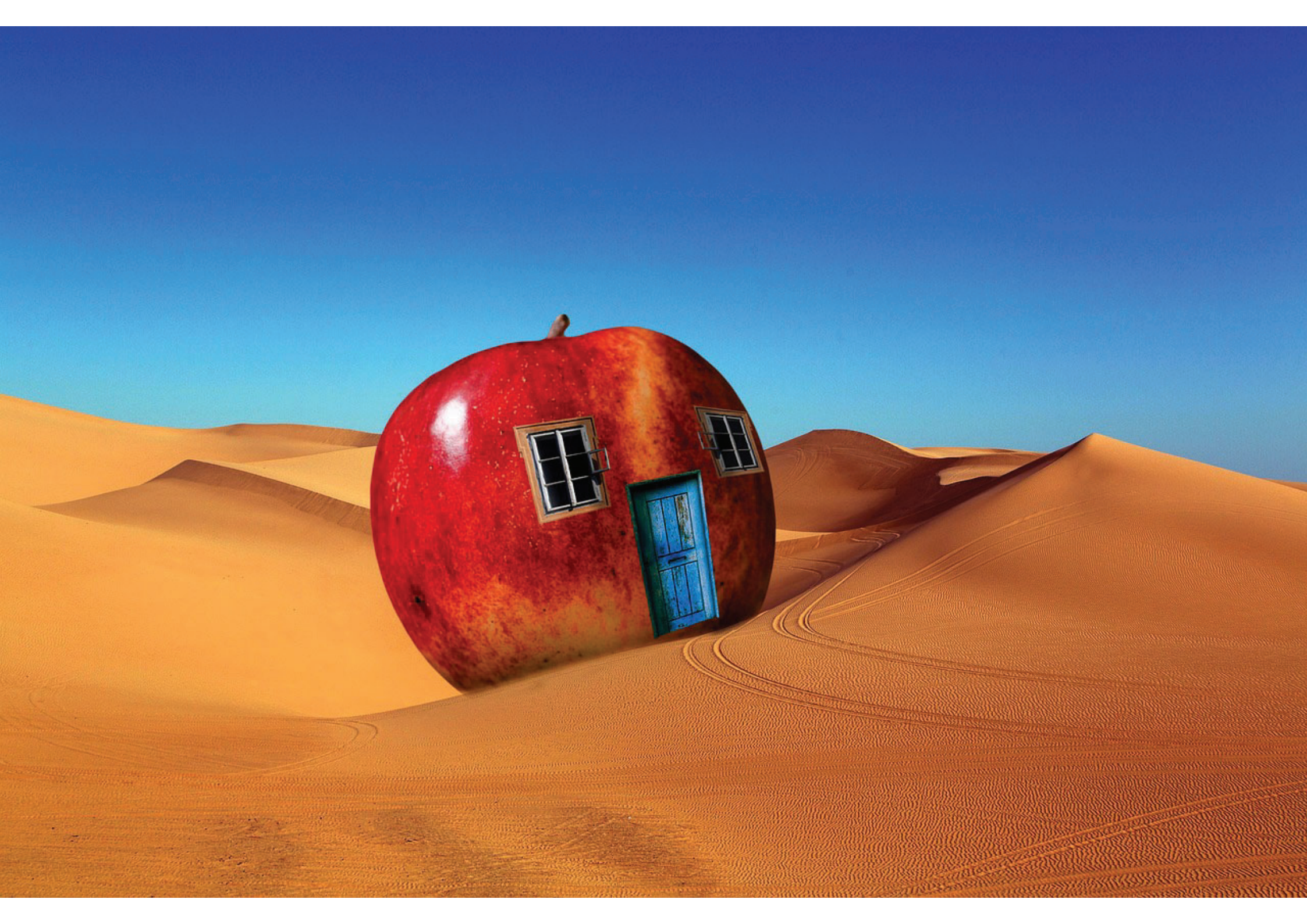


















REST AREA

SINGLE
OCCUPANCY
ONLY

WARNING
PLEASE LOOK UNDER
YOUR VEHICLE
FOR PENGUINS





