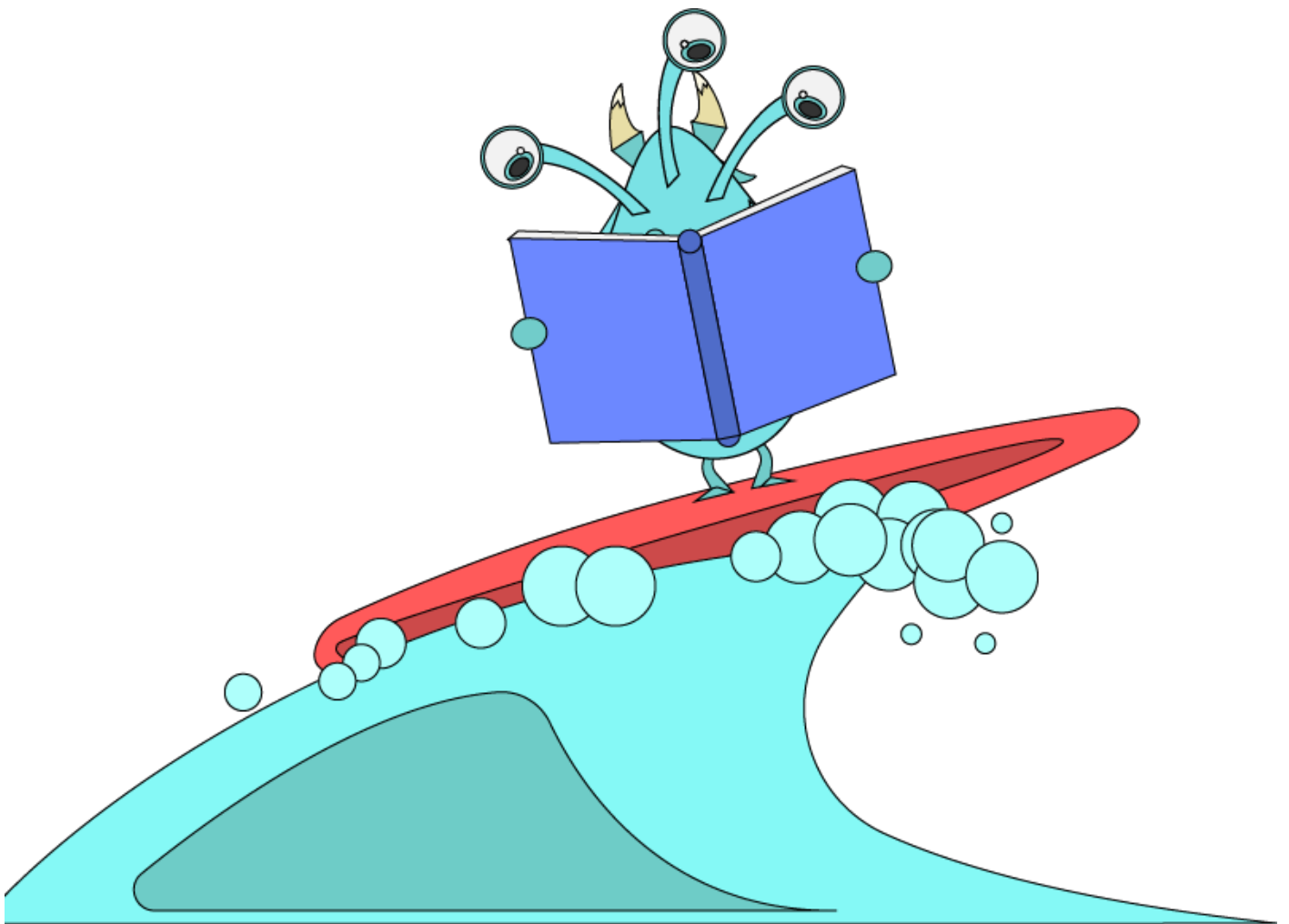


Learning Intention

I am learning how
pictures show things
are moving.



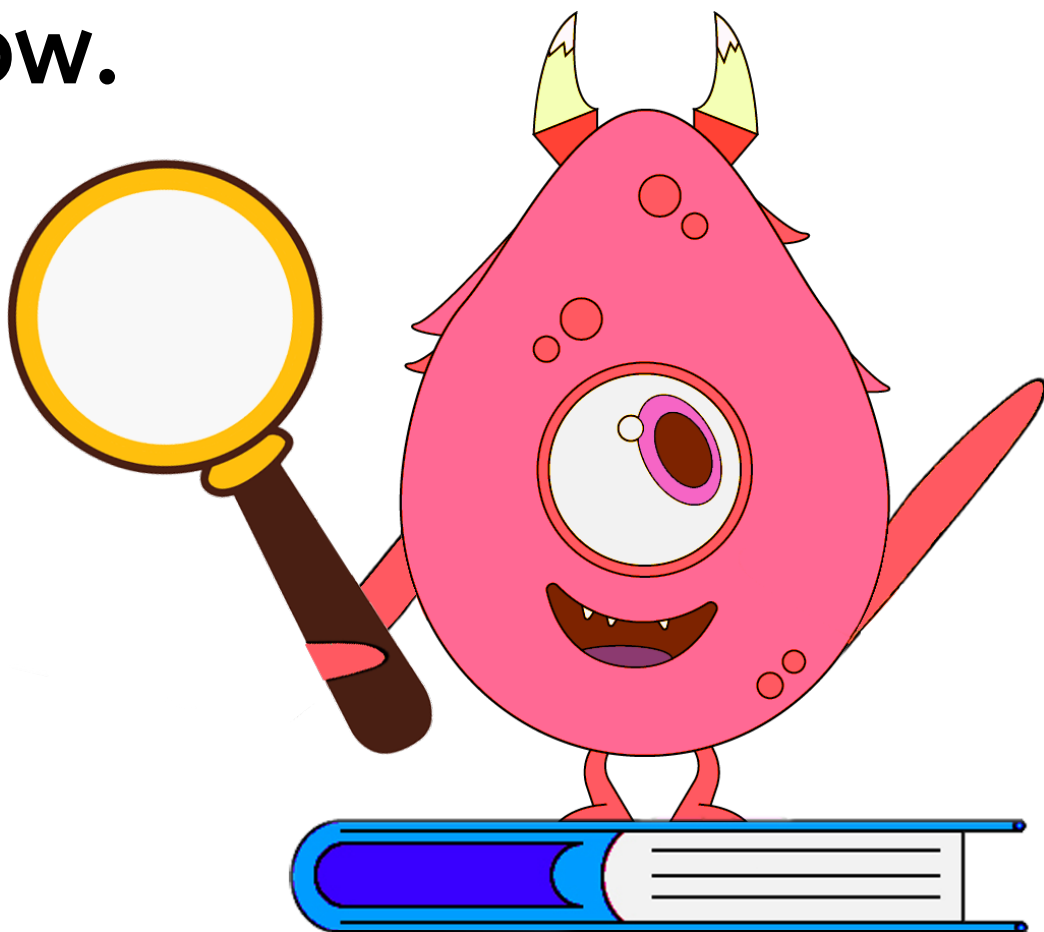
Success Criteria

I will use my own knowledge and information in the pictures to work out whether something is moving or still. I will look for details which show which way it is moving and how fast it might be going.



Inferring

Inferring means to figure something out without being told. Great readers infer by looking for clues in the words and pictures and connecting these with what they already know.



Learning Checklist

Check these off as you go.

Discuss:	✓
Which clues helped us to know how fast or slow something moved?	
Which clues helped us to know which direction way something moved?	

