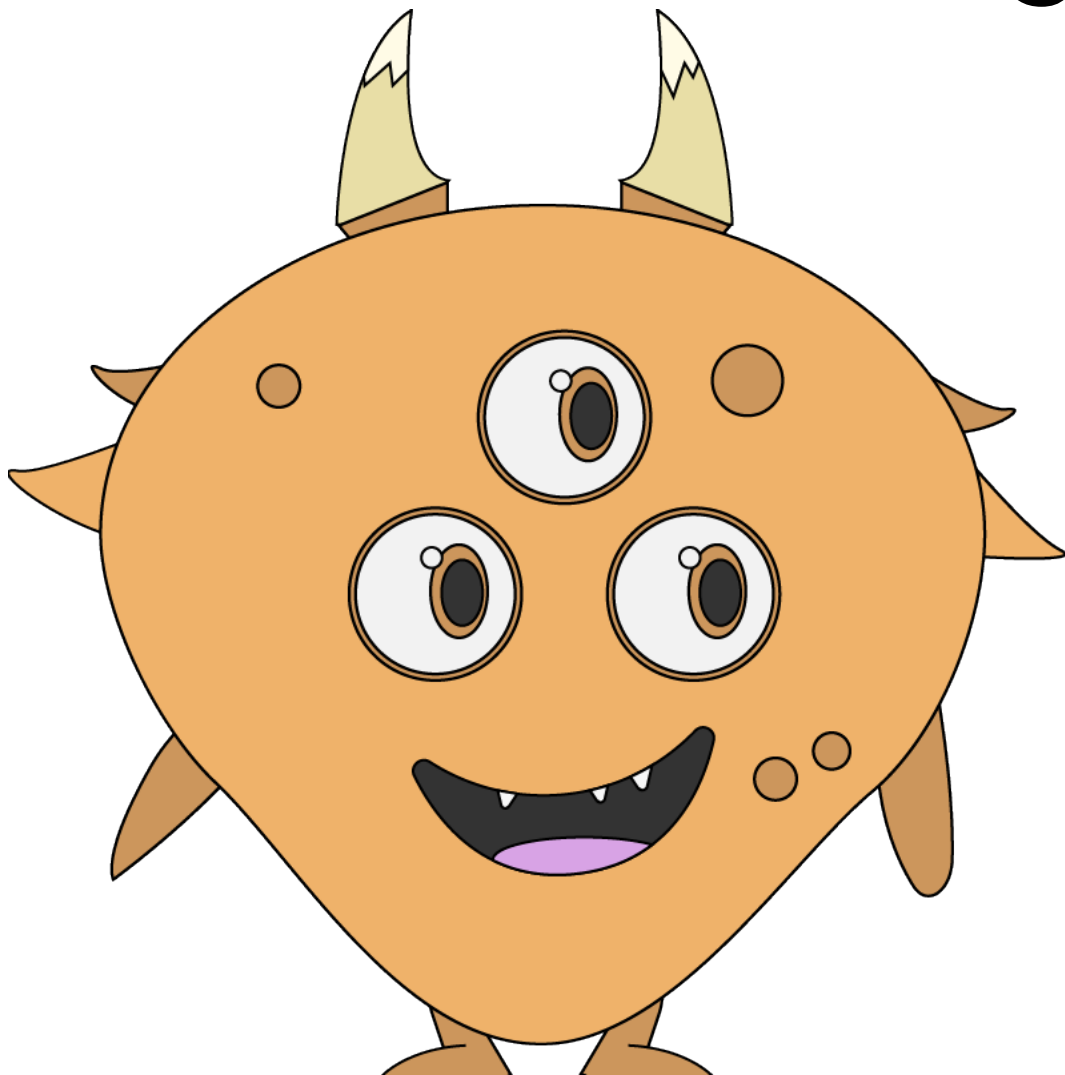


Learning Intention

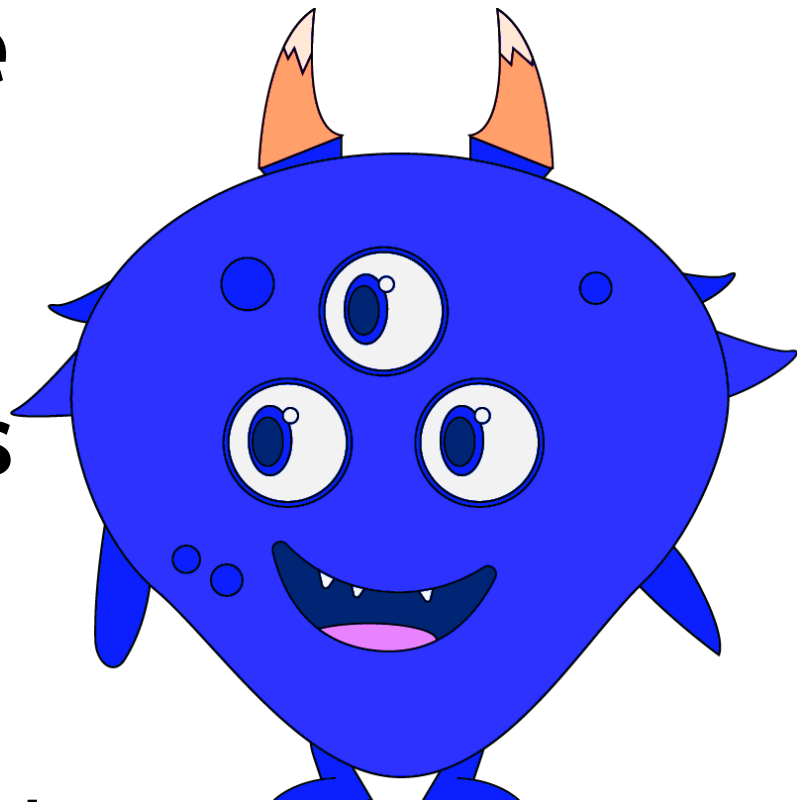
I am learning how to
make better
connections about
what I am reading.



Success Criteria

I will listen to some connections and think about whether they are helpful or not very helpful for understanding the story.

I will decide whether our class connections should go in the “Helpful” list or in the “Unhelpful” list.

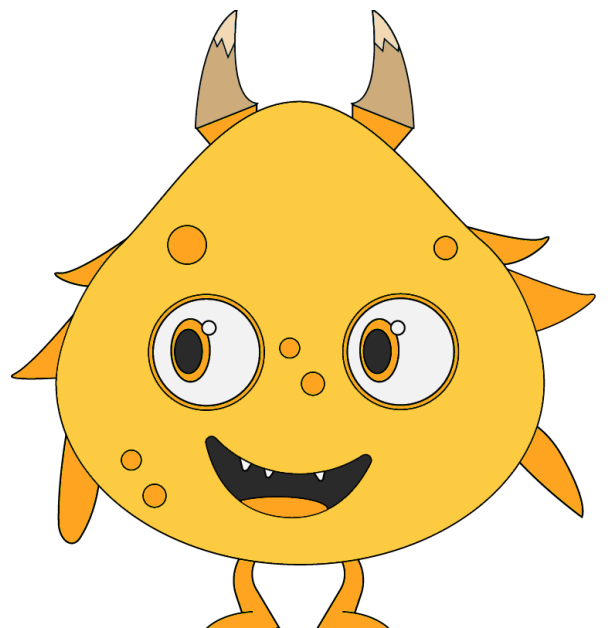


Connecting

When an idea reminds us of something we know or that has happened to us, this is called 'making a connection'. Great readers make connections **before**, **during** and **after** reading.

They think, “What does this remind me of?”

“Has something like that happened to me?”



Learning Checklist

Check these off as you go.

Tell a friend:	✓
what a helpful connection is	
what an unhelpful, or not helpful connection is	

