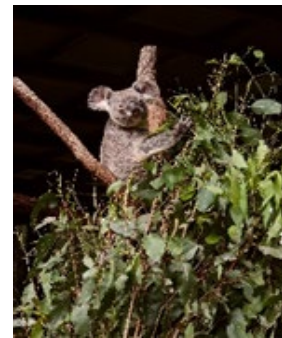


What Koalas Eat

Did you know koalas are fussy eaters? Have you noticed that during the day koalas are often asleep? They feed on eucalyptus leaves and eat mostly at night.



Eucalyptus leaves grow on gum trees. Even though there are hundreds of different kinds of eucalyptus leaves, koalas are fussy. They only eat the leaves from some eucalyptus trees. Not only that, but koalas won't even eat all the leaves from one branch. They use their amazing sense of smell to sniff out the best tasting leaves and leave all the others behind.



Food gives animals energy. Humans eat lots of different foods and this gives them the energy they need. When you have lots of energy you can move around a lot and have fun without getting too tired. Eucalyptus leaves don't give koalas much energy. Koalas conserve, or save, their energy by moving around slowly and sleeping 18 to 20 hours every day. That's most of the day!